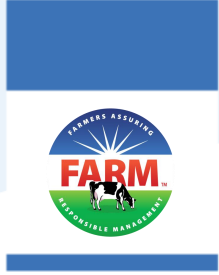




Programa Nacional Lechero FARM para el Cuidado Animal

Dr. Jamie Jonker, Vice-Presidente, Sustentabilidad y Asuntos Científicos
Emily Yeiser Stepp, Vice-Presidente, Programa Nacional Lechero FARM



¿Qué es FARM?



Objetivo del Programa

Ofrecer a los consumidores y clientes la seguridad de que los productores de leche cuidan de sus animales, de su mano de obra y de su tierra de manera humana y ética.

Misión del Programa

Ayudar a los productores de leche y a las cooperativas/procesadoras a garantizar a los consumidores y clientes que los productores de leche administran sus animales, su mano de obra y sus tierras de manera responsable mediante métodos impulsados por la ciencia y un compromiso de mejora continua.



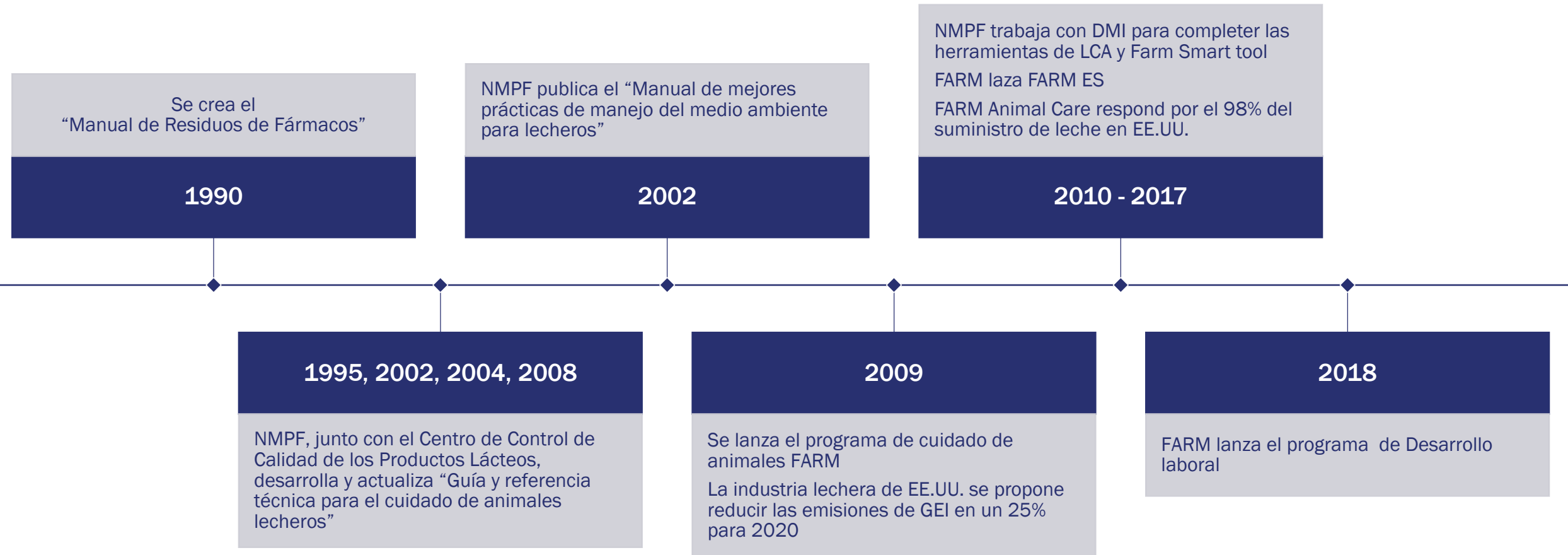
Historia del Programa

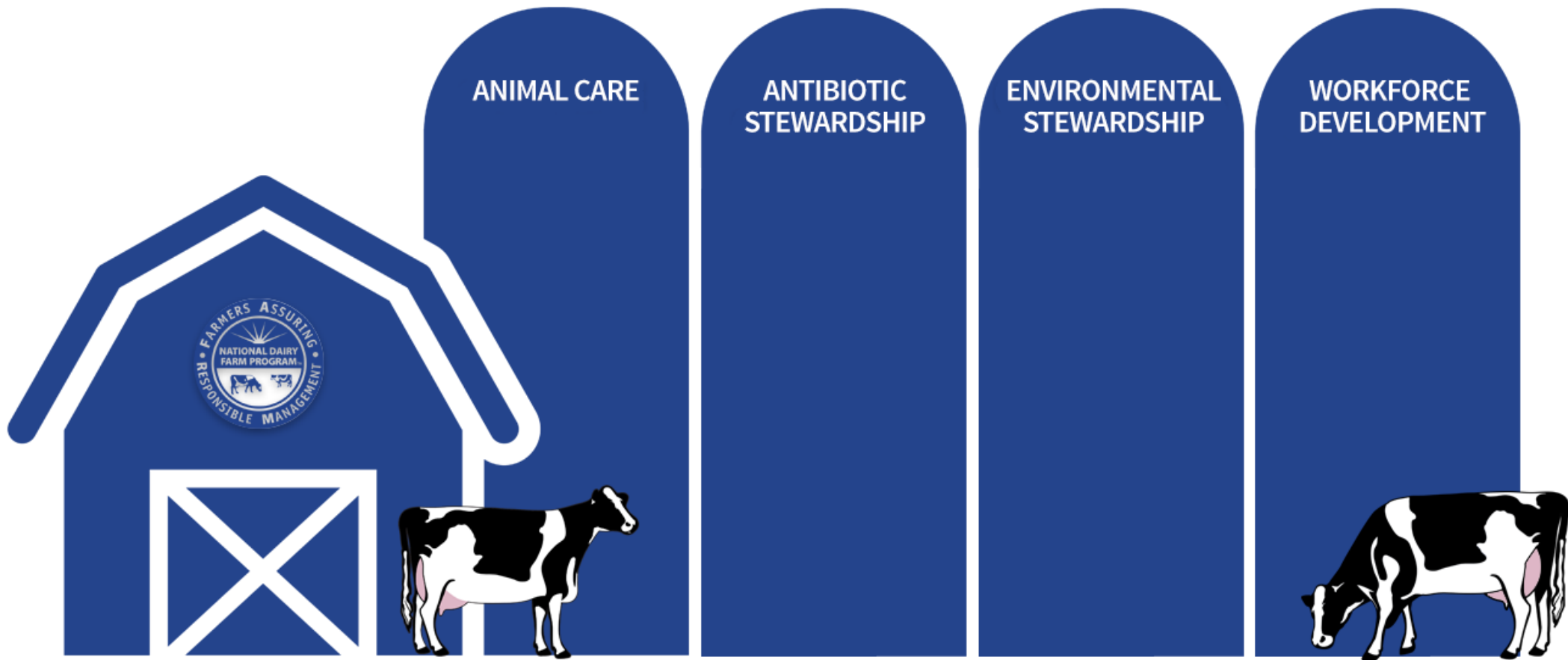
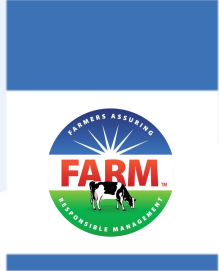
La industria lechera, a través de la **Federación Nacional de Productores de Leche** con el apoyo de **Dairy Management, Inc.** inició un programa voluntario llamado **FARM: Farmers Assuring Responsible Management (Agricultores Garantizando una Gestión Responsable)** en el 2009. A través del **Centro de Innovación**, la comunidad lechera se ha organizado en torno a FARM como el programa de responsabilidad social de la industria.





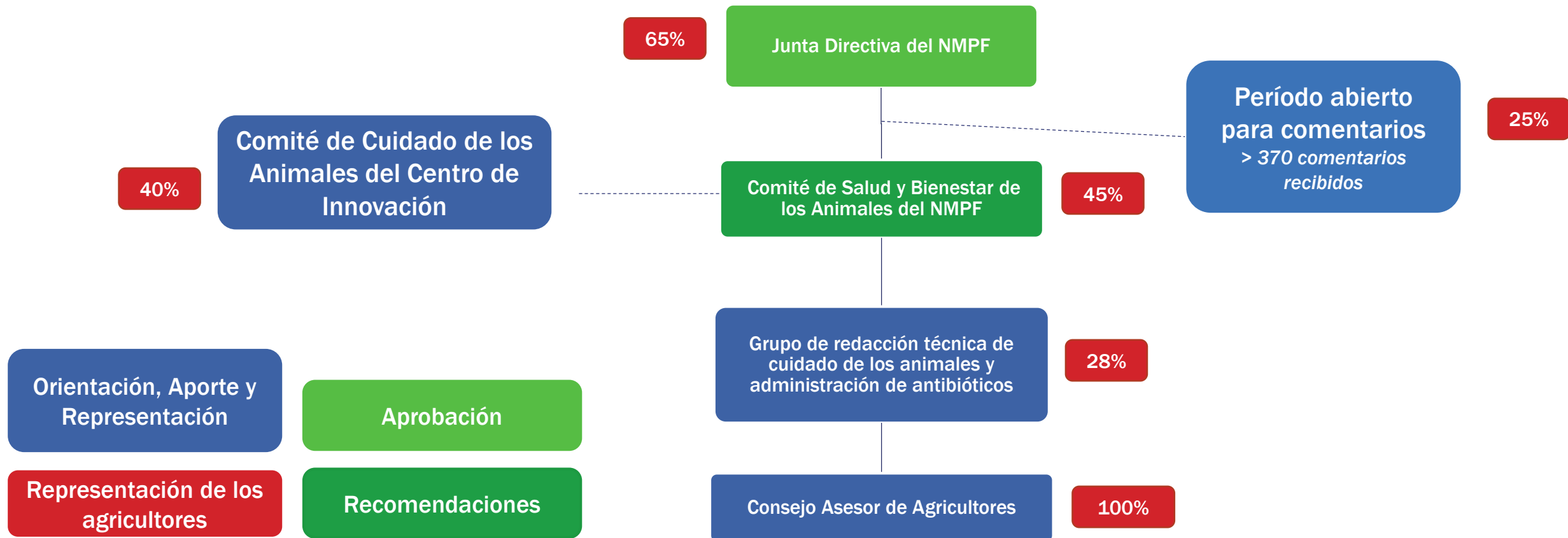
Historia del programa







Política de FARM para el Cuidado de los Animales





Mejora Continua

Versión 1.0
(2009 – 2012)

Participación
Voluntaria

Versión 2.0
(2013 – 2016)

Participación
obligatoria

Planes de acción
voluntaria

Eliminación
Progresiva de
Caudectomía 2022

Versión 3.0
(2017 – 2019)

Mayor rendición de
cuentas

Planes obligatorios
de acción correctiva:
Capacitación, VCPR,
caudectomía

Control de puntos
críticos

Período de prueba/
Suspensión

Versión 4.0
(2020-2022)

Aumento en la
rendición de cuentas

Acciones
inmediatas

Acortar Plazos

Supervisión de las
implementaciones



Alcance del cuidado de los animales en FARM

Incluye	No incluye
Estructura y base para el cuidado de los animales en la granja	Garantía de una cultura
La creación una cultura de mejora continua	El reemplazo de la supervisión & administración de los empleados
Resultados a base de ciencia,	Garantía que se sigan las mejores practicas de gestión
Panorama de las practicas de gestion agrícola	Eliminación de las amenazas a la confianza de los consumidores
Requisito que el productor vigile, supervise y participe activamente en la granja	



Cuidado de Animales en FARM en cifras

~130 participantes

98% del suministro de leche de los Estados Unidos en 49 estados

>60,000 Evaluaciones por 2da parte realizadas.

> 450 evaluadores de cuidado de animales certificados por FARM

Rigor de la formación de los evaluadores



1. Candidatos solicitan la aprobación(www.nationaldairyfarm.com)
2. Los candidatos completan la entrevista telefónica y son calificados con una rúbrica de puntuación.
3. Los candidatos aprobados completan el trabajo previo y participan en la capacitación organizada por FARM
4. Deben volver a certificarse anualmente (cada 365 días) en un programa de capacitación organizado por FARM y obtener una puntuación acumulada del 80% en los exámenes de certificación.

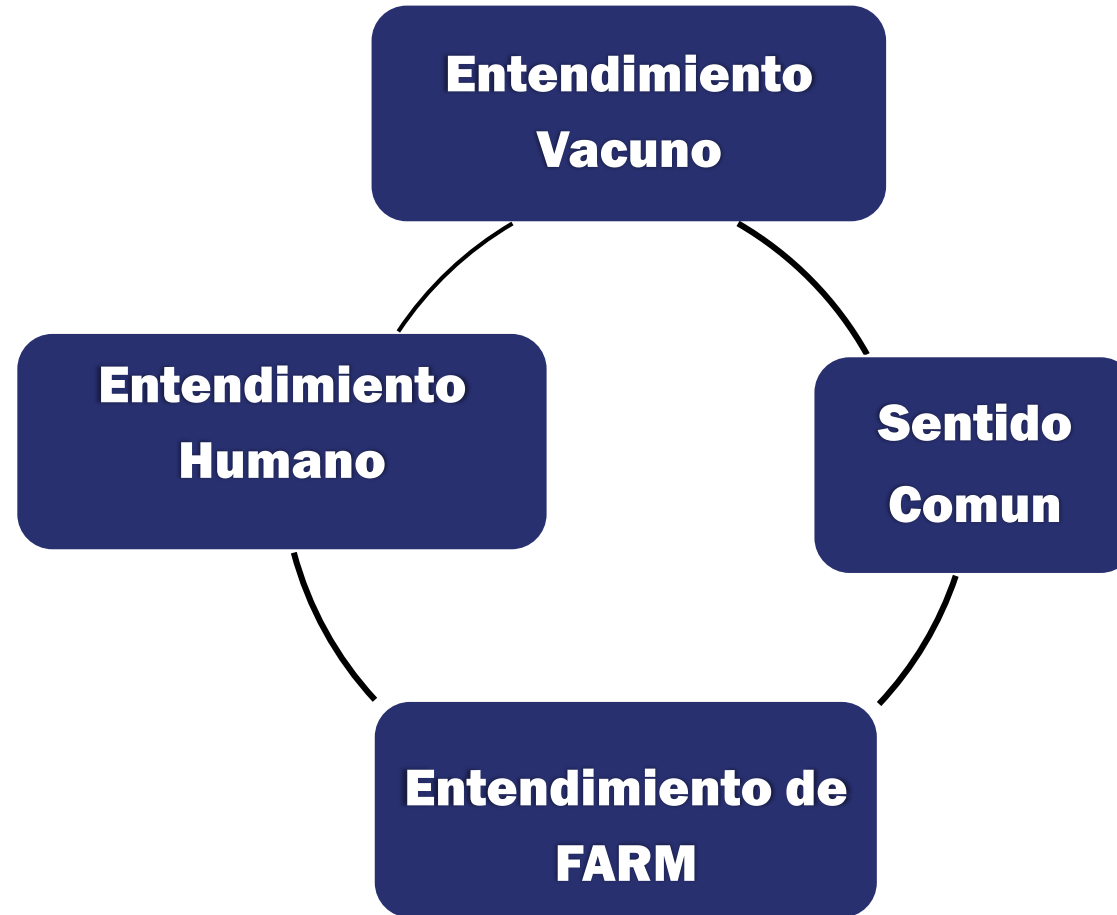
Manteniendo la certificación

- El evaluador debe ser observado por un instructor certificado por lo menos una vez al año

FARM reserva el derecho de rechazar o revocar la certificación de cualquier candidato o instructor de evaluación que no cumpla con los normas del programa después de su certificación.



Bases para ser un buen evaluador



Componentes del programa

Mejores Prácticas de Manejo



Evaluaciones de 2das partes

- Pre-entrevista
- Revisión y verificación del protocolo
- Observaciones de los animales
- Observaciones de la instalación
- Entrevista de cierre
- Seguimiento; planes de acción

Verificaciones por 3ros





Mejores prácticas de manejo



- Esquemas:
 - Medidas en función de los recursos
 - Medidas en función del manejo
 - Medidas en función del animal
- Proporcionando un cuadro completo de expectativas



Evaluando el cumplimiento a nivel de granja

¿Quiénes? Evaluadores certificados que han sido capacitados por los Evaluadores FARM de segunda parte

¿Qué? Llevar a cabo una revisión y evaluación externa en cada granja participante basada en las directrices del programa FARM

¿Cuándo? Cada granja lechera de EE.UU. debe tener una evaluación de segunda parte por lo menos una vez cada 3 años

¿Por qué? Esto es una parte esencial de un riguroso programa de garantía de calidad para asegurar que los participantes cumplan con las expectativas del programa. Le permite a FARM garantizar la calidad a las partes interesadas.



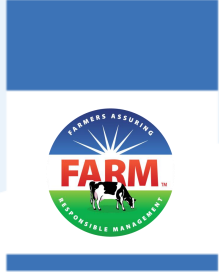
Verificando la integridad del programa

¿Cuándo? Cada 6 meses se selecciona una muestra aleatoria* de todas las instalaciones elegibles de las que fueron evaluadas en los 6 meses anteriores

¿Por qué? Para demostrar la integridad del programa mediante la evaluación objetiva de la consistencia y la precisión de los Evaluadores FARM y el programa en sí

* Una muestra aleatoria se utiliza para hacer afirmaciones estadísticamente válidas sobre el cumplimiento con las pautas del programa FARM sin tener que evaluar todas las granjas dos veces.





Cuidado de Animales

Versión 4.0

Cuidado de animals en FARM Versión 4.0

Normas de prioriad



Inmediatas

Dentro de 48 horas

- Alto a la rutina de caudectomía

Corrección Obligatoria

Dentro de 9 meses

Normas aun no cumplidas

- Revisión veterinaria
 - VCPR
 - Plan de salud del rebaño
- Prácticas y protocolo antes de destetar becerro
 - Cauterización antes de las 8 semanas
- Prácticas y protocolo de animales no ambulatorios
- Prácticas y protocolo de eutanasia
- Protocolo adecuado de transporte
- Acceso al pienso y agua
- Educación continua para empleados que no son parientes

Mejora continua

En un plazo de 3 años

- Puntos de referencia al observar al animal:
 - Calificación de condición corporal
 - Corvejón/Rodilla
 - Locomoción
 - Rabo roto
- Tratamiento del dolor al cauterizar
- Registros escritos de tratamiento con medicamentos disponibles para su revisión por el veterinario de registro
- Educación continua para empleados que son parientes

 =
Actualizada/Nueva



Prácticas y Protocolo de Verificación

- ***Becerras sin destetar***

- Manipulación/movimiento adecuado
- Calostro en menos de 6 horas
- Agua y pienso al tercer día
- Cauterización antes de las 8 semanas
- Tratamiento del dolor al cauterizar*

- ***Eutanasia***

- Criterio para la eutanasia
- Método de AABP/AVMA
- Desecho de animales

- ***No ambulatorios***

- Movimiento adecuado
- Atención médica inmediata
- Acceso a la alimentación, al agua, protección contra el calor y el frío, separación de otros animales ambulantes y protección contra los depredadores

- ***Aptos para transporte***

- Animales aptos para el mercado
- Describe la conformidad con la recolección de la leche y la carne



Participación de los interesados

Comunidad Veterinaria

- Trabajar de cerca con AABP
- Proporcionar talleres/exposiciones comerciales anuales en la convención de la AABP a partir de 2016
- Crear recursos educativos
- Alentar y ayudar a promover participación comunitaria a nivel local

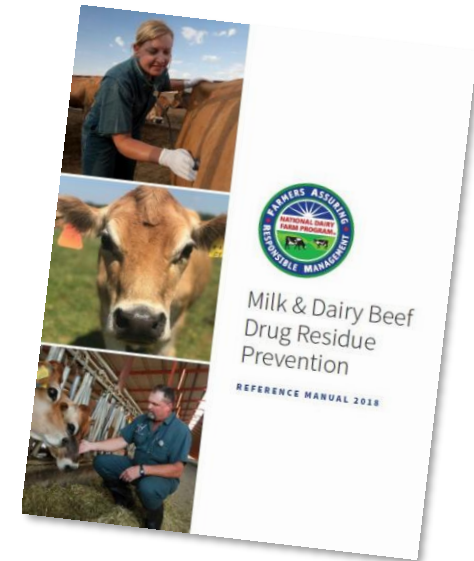


Comunidad de carne de res

- Asociación Colaborativa
- Equivalencia entre FARM/BQA
- Sinergias en torno a la carne vacuna
- Cursos de formación sobre ganadería organizados conjuntamente
- Representar conjuntamente a las industrias en exposiciones y conferencias comerciales BQA/FARM Equivalencias

Asociaciones y Compañías Lecheras

- Desarrollo cooperativo de recursos
- Intercambio de información






Recursos para productores y participantes



Nuevos Recursos


FARM Animal Care Evaluation Preparation Guide
 2020-2022
 Version 4

CONSIDERATIONS WHEN TRANSPORTING DAIRY ANIMALS


Make decisions in a timely and efficient manner, always considering animal well-being first.

DO


- ✓ Treat, cull or euthanize animals promptly. Segregate sick, injured and non-ambulatory animals from the rest of the herd.
- ✓ Use a BQA Transportation (BQAT)-certified company that is knowledgeable about your animal care expectations and provides safe and comfortable transport for animals. To become certified visit: www.bqa.org.
- ✓ Delay transport of animals that appear exhausted or dehydrated. Cows experiencing heat stress or exhaustion may exhibit open-mouth panting and be reluctant to move. Transport once the animal is rested, fed and rehydrated.
- ✓ Milk lactating cows just prior to transport.

DON'T TRANSPORT ANIMALS

- ✗ That are non-ambulatory.
- ✗ Until all proper milk and meat withdrawal times have been followed. Refer to the *FARM Milk & Dairy Beef Residue Prevention Manual* for proper withdrawal times.
- ✗ In poor body condition, generally a body condition score of less than 2:




SCORE 1




SCORE 2
- ✗ With conditions that risk their well-being and are unlikely to pass pre-slaughter inspection, including but not limited to:
 - Emaciated animals
 - Visible open wounds
 - Unreduced prolapses
 - Cancer eye
 - Suspected central nervous system symptoms
 - Cows that are calving or have a high likelihood of calving during transport
 - Blindness in both eyes
 - Fractures or lameness (a score greater than 2 using the FARM locomotion scoring system)
 - Distended udder causing pain and ambulatory issues
 - Fever greater than 103°F
 - Drug residues
 - Peritonitis
- ✗ With bone fractures of the limbs or injuries to the spine.
 - Animals with recent fractures unrelated to mobility should be culled and transported directly to a packing or processing facility.

Always consult with your veterinarian if you are unsure if an animal should be transported. And, remember, abuse is never tolerated – including pre-transport and during transport.

This resource was created by the collaboration of the following organizations:



nationaldairyfarm.com | bqa.org



Animal Care Reference Manual

VERSION 4.0 ABBREVIATED



Nuevos recursos – A mi sí me importa

The screenshot shows the FARM website interface. At the top, there is a navigation bar with links for NEWSROOM, STORE, EVENTS, BLOG, CONTACT US, REPORT ANIMAL ABUSE, and PARTICIPANT LOGIN. Below this is a secondary navigation bar with Home, What is FARM?, FARM Standards, and FARM Resources. A search bar is located on the right. The main content area features a video player showing a close-up of two cows in a barn. The video player has a progress bar at the bottom showing 00:18 out of 09:57. Below the video player, there is a caption:

I CARE - A MI SI ME IMPORTA illustrates to dairy employees how important their role is in the care of the animals. This 10 minute video outlines the importance of being committed to animal care for dairy employees and the joint commitment of employees, supervisors and farm owners to work together to protect their livelihood and the wellbeing of the animals in their care. It also shares the intent of animal activists, undercover employee tactics and encourages employees to alert supervisors when something is not right.

The image shows two overlapping certificates of completion. The top certificate is in English and reads:

Certificate of Completion
THIS CERTIFICATE IS AWARDED TO _____
FOR THE _____
Me Importa
AND THE ANIMALS WITHIN MY CARE.

DAIRY

co **Alltech**

The bottom certificate is in Spanish and reads:

Certificado de Cumplimiento
ESTE CERTIFICADO ES OTORGADO A _____

POR COMPLETAR EL VIDEO
I Care - A Mi Se Me Importa
Y EL COMPROMISO CON MI CARGO EN LA LECHERÍA Y LOS ANIMALES QUE
ESTAN DENTRO DE MI CUIDADO

FECHA _____ LECHERÍA _____

FARM **Animal Agriculture Alliance** **Elanco** **Alltech**
Connect | Engage | Protect

<https://nationaldairyfarm.com/icare-video/>

Password: icare2020

Recursos para evaluadores

Hygiene

This booklet cover measures 5.5 inches x 5.5 inches. When open, the length of the cover is 11 inches. Turn to inside back cover for a quick reference guide with more details on hygiene scoring and measuring.

LACTATING COWS

SCORE 1: CLEAN	SCORE 2: MODERATE	SCORE 3: VERY DIRTY
Mud or manure does not exceed 11 inches in length in areas A or B	Mud or manure exceeds 11 inches in length in a single area A or B	Mud or manure exceeds 11 inches in length in both areas A and B

Locomotion

SCORE 1 NORMAL
Animal walks easily with no or only minor changes in gait. Steps may be slightly uneven.

SCORE 2 MODERATE
Asymmetric gait. Exhibits any of the following: shortening of the stride, slight limp, weight transfer while moving, but may bear weight evenly while standing.

SCORE 3 SEVERE
Difficulty bearing weight on a limb and may also exhibit obvious back arch or head bob. Animals in this

CONTINUING EDUCATION

Standard

FAMILY LABOR	NON-FAMILY LABOR
Failed Standard Triggers Continuous Improvement Plan	Failed Standard Triggers Mandatory Corrective Action Plan
Stockmanship continuing education	Stockmanship continuing education
Pre-weaned calf care continuing education	Pre-weaned calf care continuing education
Non-ambulatory animals continuing education	Non-ambulatory animals continuing education
Euthanasia continuing education	Euthanasia continuing education
Determining animals that are fit for transport continuing education	Determining animals that are fit for transport continuing education

Any individuals with the any of the above responsibilities are expected to have annual, documented continuing education in that area.

Compliance

FAMILY LABOR	NON-FAMILY LABOR
Each family member (18 years and older) can have a documented training record for those identified tasks they have responsibility within	Each individual (18 years and older) must have a documented training record for those identified tasks they have responsibility within
OR One family member can sign on behalf and take responsibility for training all immediate family members (18 years and older); individuals must be listed on document	

Immediate family is defined as a grandparent, parent, in-law, spouse, partner, sibling, child or grandchild of the legal guardian(s) or legal owner(s) of the dairy operation.

Evaluator Pocket Guide – Coming August 2020

With the guidance of the American Association of Bovine Practitioners (AABP), the National Dairy FARM Program Animal Care Version 4 finds the following forms of pain acceptable to meet the following standard:

Pain mitigation is provided for disbudding

This is not an exhausted list of pain control options. The FARM Program does not identify any veterinary drugs on this list. FARM urges producers to consult with their veterinarian before using any veterinary drug, including any of the products identified on this list. Medications listed require a prescription from a veterinarian and appropriate veterinary supervision. There are no products currently labeled to be used for analgesia (pain relief) for disbudding or dehorning pain, however under the guidance and prescription of a veterinarian a local anesthetic can be prescribed under if federal regulations are followed (refer to the Drug Use Clarification Act or AMDUCA).

Local Anesthetic

Use of a local anesthetic mitigates the immediate pain associated with disbudding and provides up to five hours of postprocedural analgesia. Federal law restricts the use of a local anesthetic to be used by or on the order of a licensed veterinarian.¹

Drug Name	Hours	Product Name
Lidocaine	1-2	Priloxin®
Meloxicam	24	Meloxicam®
Flunixin meglumine	24	Flunixin meglumine®

Non-steroidal anti-inflammatory drugs (NSAIDs)

These drugs are used to provide analgesia and reduce inflammation in the immediate post-procedure period.

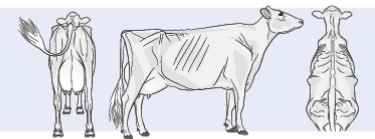
Drug Name	Hours	Product Name
Meloxicam	24	Meloxicam®
Flunixin meglumine	24	Flunixin meglumine®

BODY CONDITION SCORING



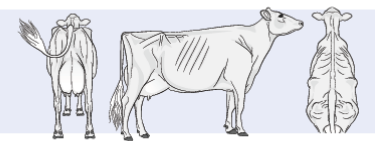
SCORE 1

Gaunt, emaciated animal, having little to no fatty tissue around tail head and short rib region. Extremely pronounced back, hooks and pins.



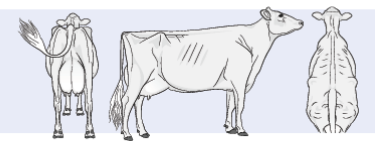
SCORE 2

Thin animal, with a minimal coverage around the tail head and short rib region. Minimal coverage over back, hooks and pins.



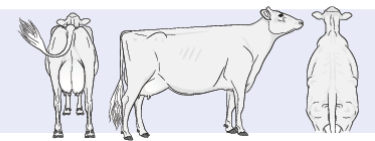
SCORE 3

Well-conditioned animal with coverage around the tail head and short rib region. Back, hooks and pins are not pronounced.



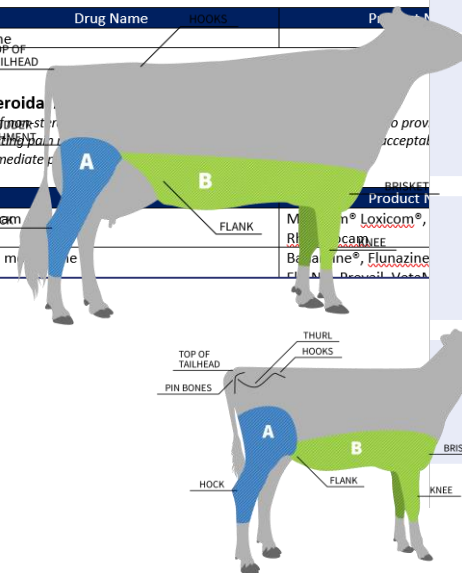
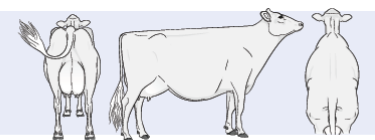
SCORE 4

Slightly over-conditioned animal with more than average coverage around tail head and short rib region, short ribs cannot be felt or seen. Back, hooks and pins have more than average coverage and bone structure difficult to see due to amount of coverage.



SCORE 5

Over-conditioned animal with thick coverage around tail head and short rib region, short ribs cannot be felt or seen at all. Back, hooks and pins have significant coverage and unable to see bone structure to amount of coverage.





Manual para participantes / Módulos en línea

Animal Care Data Management

Menu Transcripts | Exit

What Data is Collected?

- ✓ Herd demographics
- ✓ Evaluation question responses
- ✓ Verification question responses

Third-Party Verification

Menu Transcripts | Exit

Fundamentals of Each Process

Click on each box to learn more.

Second-Party Evaluations

- ✓ This is an external review and assessment of on-farm animal care practices on a participating farm based on the National Dairy FARM program guidelines. Participating farms must undergo a Second-Party Evaluation at least once every three years.
- ✓ It's a necessary part of a robust animal care/quality assurance program and involves routine monitoring of specific categories.

Third-Party Verification

- ✓ Third-Party Verification inspects a representative percentage of participating farms each year to provide statistically valid data regarding adherence to FARM program guidelines.
- ✓ This is an objective evaluation of conformity and verification of Second-Party Evaluation.



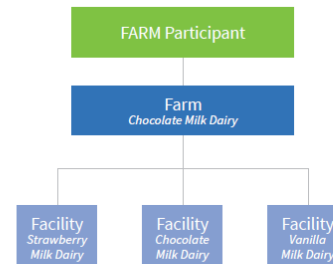
02

Definitions

Participant: Cooperative, proprietary processor, association or farm that has signed current participation agreement with FARM. Participants manage the FARM Animal Care Program on behalf of the farms and facilities belonging to the entity.

Farm: One or multiple facilities owned by the same person, family or group where lactating cows are located and Second-Party Evaluations occur.

Facility: Farm business that provides milk to a participant. A facility is a single site where lactating cows are located and Second-Party Evaluations occur. A farm may consist of a single facility or multiple facilities.



8 ANIMAL CARE PARTICIPANT HANDBOOK

Second-Party Evaluation: An external review and assessment of on-farm animal care practices on a participating facility based on the National Dairy FARM Program guidelines. All facilities within a participant's supply chain must undergo a Second-Party Evaluation at a minimum of once every three years.

Second-Party Evaluator: A trained dairy professional certified by the FARM Program to complete on-farm Second-Party Evaluations. Only who has completed annual FARM is qualified to conduct Second-Party Evaluations. Typically, Second-Party Evaluators are veterinarians or independent evaluators. Evaluators must have at least a college degree and/or on-farm experience, which can include a science or other relevant curricula. Evaluators must complete a phone interview and on-farm training and pass an evaluation. Evaluators must receive annual all requisite training to maintain and ability to conduct on-farm evaluations.

Conditional Certification: If the allegations are deemed credible, the protocol is initiated, and the facility will have a Conditional Certification; a participant may continue to procure milk from a facility with a Conditional Certification and remain in good standing with FARM.

Decertified: If the protocol investigation concludes that willful mistreatment or neglect is substantiated, and the facility is not in compliance with FARM program guidelines, the facility will be decertified.



Third-Party Verifications: A professional, not employed by a participant, who does not have an interest in the operation or the outcome of the program. Third-Party Verifiers must have the necessary qualifications as Second-Party Evaluators.

Certified: A facility that is up to date with FARM Animal Care evaluation in the program evaluation cycle, does not have any overdue corrective action plans to the FARM Willful Mistreatment

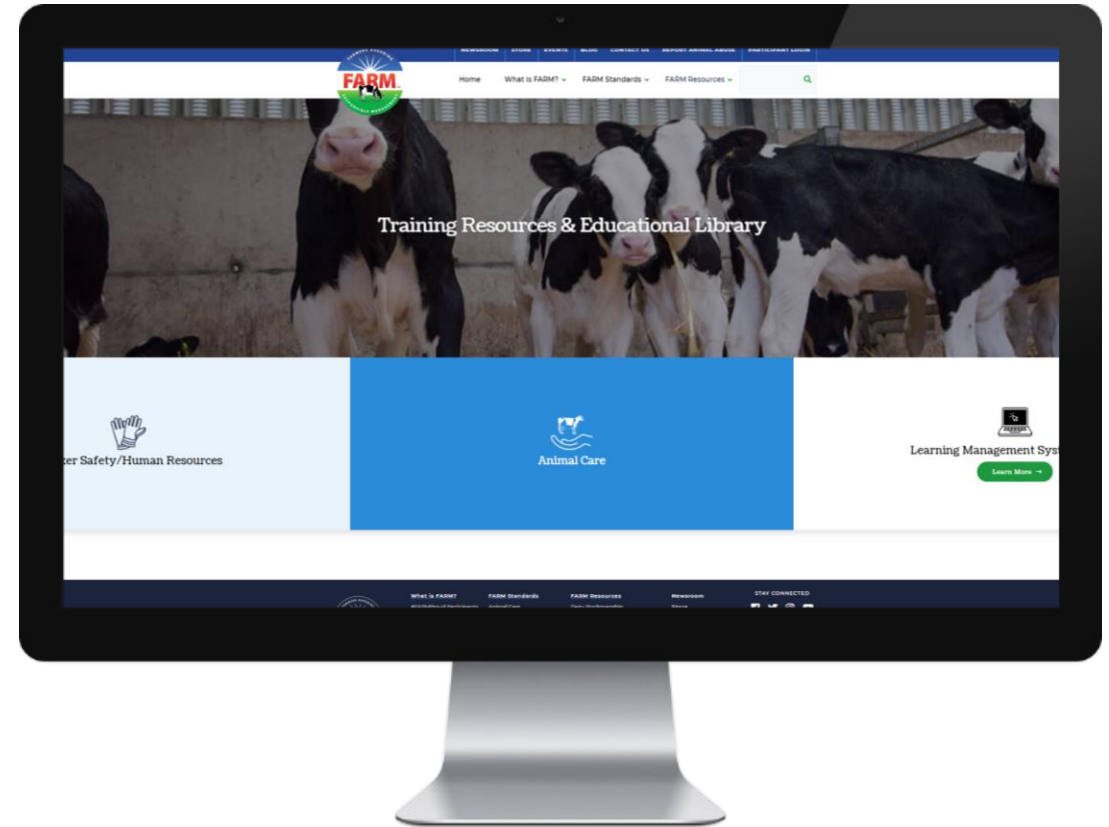
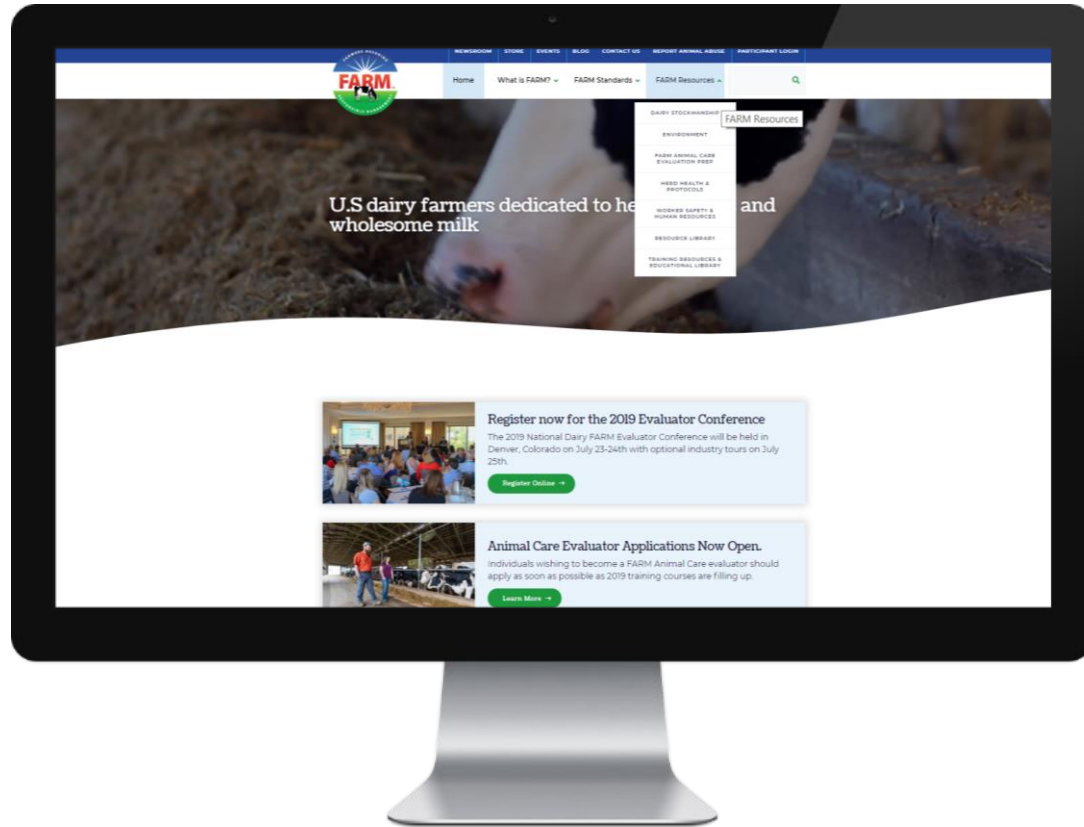


Animal Care Participant Handbook
VERSION 4.0

Coming August 2020



Página web de FARM



www.nationaldairyfarm.com



Compromiso por parte los consumidores de lácteos



2020 Clientes prioritarios para la participación en la cadena alimentaria

Venta al por menor



Restaurantes



Marcas



Sharing smiles





GRACIAS

nationaldairyfarm.com



dairyfarm@nmpf.org