

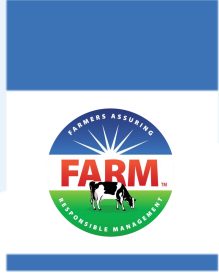
The National Dairy FARM Animal Care Program



O Programa Nacional de Manejo FARM para laticínios

Dr. Jamie Jonker, Vice-Presidente, Assuntos Científicos e de Sustentabilidade

Emily Yeiser Stepp, Vice-Presidente, The National Dairy FARM Program



O que é FARM?



Objetivo do Programa

Assegurar aos consumidores e clientes que os criadores de gado leiteiro cuidam dos seus animais, trabalhadores e o solo de maneira ética e humanizada.

Missão do Programa

Auxiliar os criadores de gado leiteiro e cooperativas / processadoras a assegurarem aos consumidores e clientes de que os criadores de gado leiteiro tratam dos seus animais, trabalhadores e solo de maneira responsável, através de métodos baseados em ciência e um compromisso à melhoria contínua.



História do Programa

A indústria de laticínios, através da **National Milk Producers Federation** com o apoio do **Dairy Management, Inc.** iniciou em 2009 um trabalho voluntário chamado **FARM: Farmers Assuring Responsible Management**. Através do **Innovation Center**, a comunidade do setor de laticínios apoiou o FARM como um amplo programa de responsabilidade social da indústria.





História do Programa

Criação do Manual de Resíduos de Drogas

1990

O NMPF publica o Dairy Environmental Handbook Best Management Practices para produtores de gado leiteiro

2002

O NMPF trabalha com DMI para completar as ferramentas LCA e Farm Smart
FARM introduz FARM ES
FARM Animal Care totaliza 98% da oferta de leite dos EUA

2010 - 2017

1995, 2002, 2004, 2008

O NMPF desenvolve e atualiza o guia de referência técnico "Caring for Dairy Animals Technical Reference Guide" com o centro de garantia Dairy Quality Assurance Center

2009

Introdução FARM Animal Care

A Indústria de Laticínios dos EUA estabelece reduzir as GEE em 25% até 2020.

2018

FARM introduz FARM Workforce Development

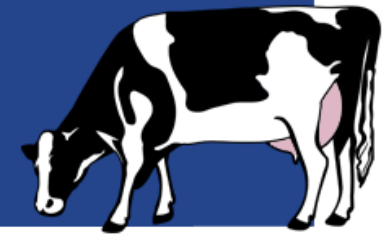


ANIMAL CARE

ANTIBIOTIC
STEWARDSHIP

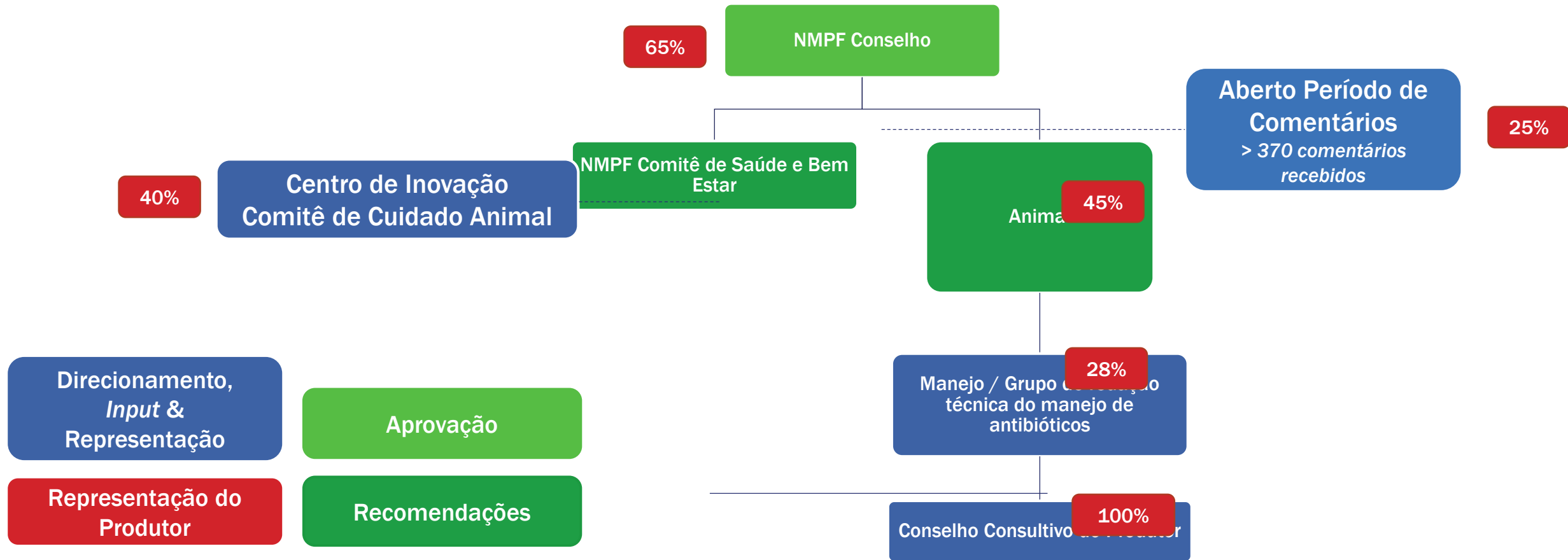
ENVIRONMENTAL
STEWARDSHIP

WORKFORCE
DEVELOPMENT





Governança do manejo FARM





Melhoria Contínua

Versão 1.0
(2009 – 2012)

Participação
Voluntária

Versão 2.0
(2013 – 2016)

Participação
Obrigatória

Planos de Ação
Voluntário

Descaudar
Eliminação gradual
2022

Versão 3.0
(2017 – 2019)

Maior
responsabilidade

Planos de ação
corretivos obrigatórios:
Treinamento; VCPR;
descaudar

Pontos de controle
críticos

Período de experiência /
Suspensão

Versão 4.0
(2020-2022)

Responsabilidade
ainda maior

Ações imediatas

Reduzir prazos

Implementações
Supervisões



Escopo do Manejo FARM

Sim	Não
Estrutura e base para manejo animal na fazenda	Assegura uma cultura
Criar uma cultura de melhoria contínua	Substitui funcionários supervisores e de gerência
Resultados, baseados em ciência, instalações e tamanho neutros	Garante que as Melhores Práticas são usadas
Rápida visão das práticas de manejo agrícola	Elimina ameaças à confiança do consumidor
Requer monitoramento do produtor, supervisão e participação ativa na fazenda	



Números do Manejo FARM

~130 participantes

98% Do fornecimento do leite doméstico dos EUA em 49 estados.

>60.000 Avaliações de 2ª parte realizadas até a presente data.

> 450 Avaliadores de manejo FARM certificados



Rigor no Treinamento do Avaliador

1. Candidatos solicitam aprovação (www.nationaldairyfarm.com)
2. Candidatos completam uma entrevista pelo telefone e são pontuados usando uma rubrica de pontuação
3. Candidatos aprovados completam o pré trabalho e participam do treinamento oferecido por FARM
4. Devem fazer a re-certificação anualmente (a cada 365 dias) através de um programa de treinamento oferecido por FARM e atingir uma nota cumulativa de 80% nos exames de certificação

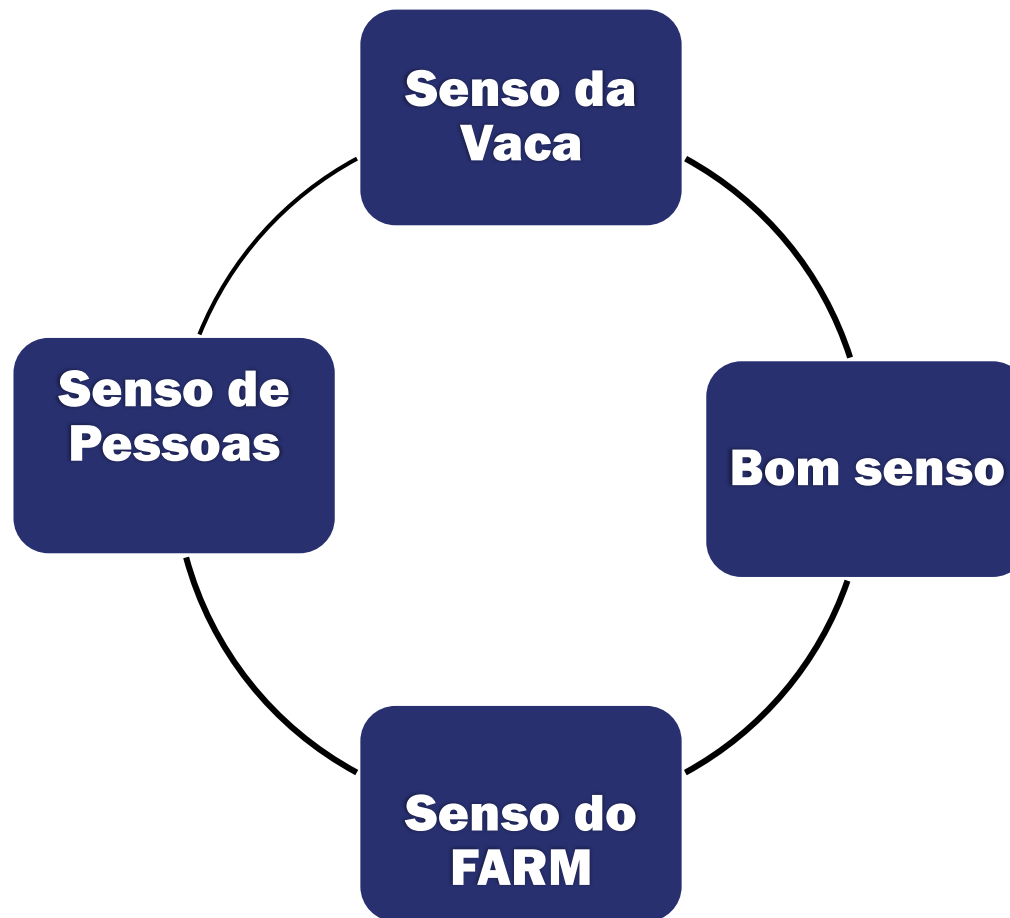
Manutenção da Certificação

- Deve ser acompanhados por um Treinador certificado pelo menos uma vez ao ano

FARM se reserva o direito de rejeitar ou revogar a certificação de qualquer candidato ou treinador avaliador após certificação que não atingem os padrões do programa.



Aspectos básicos para ser um grande avaliador



Componentes do Programa

Melhores Práticas Gerenciais



Avaliações de 2ª Parte

- Pré-entrevista
- Revisão do Protocolo e Verificação
- Observações animal
- Observações das Instalações
- Entrevista de encerramento
- Ação de acompanhamento

Verificações de Terceiros





Melhores Práticas Gerenciais



- Linhas Gerais:
 - Medidas baseadas em recursos
 - Medidas baseadas em gestão
 - Medidas baseadas em animais
- Fornecer um conjunto abrangente de expectativas

Avaliando a Conformidade no nível da propriedade

Quem? Avaliadores certificados que foram treinados pelos Avaliadores de 2ª Parte do FARM

O que? Realizar uma revisão e avaliação externa de cada propriedade com base nas diretrizes do programa FARM.

Quando? Cada propriedade de pecuária leiteira deve realizar uma avaliação de 2ª parte pelo menos a cada 3 anos.

Por que? Uma parte essencial de um rigoroso programa de garantia de qualidade para assegurar que os participantes atinjam as expectativas do programa. Permite que FARM assegure a qualidade para as partes interessadas.



Verificando a Integridade do Programa

Quando? A cada 6 meses, uma amostra aleatória* de todas as instalações elegíveis é feita entre as instalações que foram avaliadas nos 6 meses anteriores.

Por que? Para demonstrar a integridade do programa ao avaliar com objetividade a consistência e precisão dos Avaliadores FARM e o programa em si.

* Uma amostra aleatória é usada para fazer alegações estatísticas válidas sobre adesão às diretrizes do programa FARM, sem precisar avaliar cada propriedade duas vezes.





Animal Care Versão 4.0

FARM Animal Care Versão 4.0

Padrões de Prioridade



Imediato

Em 48 horas

- Descaudar não é rotina

 = *Atualizado/ Novo*

Correções obrigatórias

Em 9 Meses

Padrões não atendidos

- Revisão veterinária
 - VCPR
 - Plano de saúde do rebanho
- Práticas e protocolos para bezerros pré-desmame
 - Descorna antes das 8 semanas de vida
- Práticas e protocolos não ambulatoriais
- Práticas e protocolo de eutanásia
- Protocolo apto para transporte
- Acesso à água e ao alimento
- Continuação ed para funcionários que não são família

Melhoria contínua

Num período de 3 anos

- Referência de observações em animais
 - Pontuação condição corporal
 - Jarrete / Joelho
 - Locomoção
 - **Caudas quebradas**
- **Manejo da dor durante descorna**
- **Registros escritos disponíveis de tratamento medicamentoso para revisão do veterinário do registro.**
- Continuação ed para funcionários que são família



Verificação de Práticas e Protocolos

- ***Bezerros pré-desmame***

- Manejo / movimentação adequadas
- Colostro num período de 6 horas
- Água e alimentação até o 3º dia
- Descorna / mochar antes das 8 semanas
- Gestão de dor para a descorna / mochar

- ***Eutanásia***

- Critério para eutanásia
- Método AABP/AVMA
- Descarte da carcaça

- ***Não Ambulante***

- Movimentação adequada
- Atendimento médico imediato
- Acesso a água e comida, proteção contra calor e frio, isolamento de outros animais ambulantes e proteção de predadores.

- ***Apto para o Transporte***

- Animais aptos ao mercado
- Delineia adesão a retirada de leite e carne.

Envolvimento das Partes Interessadas

Comunidade veterinária

- Trabalhar junto com AABP
- Auxiliar nos *workshops/exposições na convenção anual da AABP desde 2016.*
- Criar recursos educacionais
- Motivar e auxiliar o envolvimento da comunidade local.

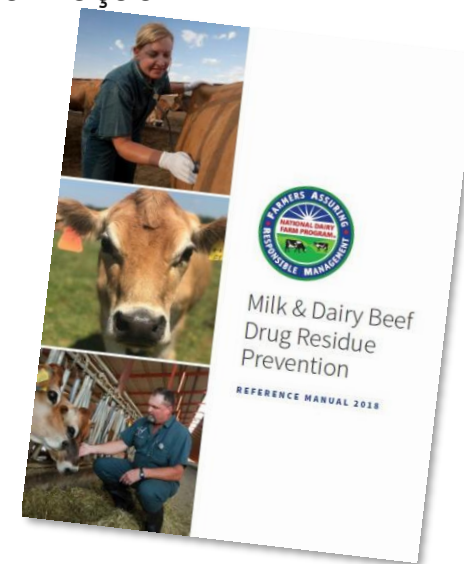


Comunidade de Corte

- Parceria de Colaboração
- Equivalência FARM/BQA
- Sinergias entre gado leiteiro e de corte
- Treinamento conjunto dos empregados da propriedade.
- Representação conjunta em exposições e conferências
- Equivalências BQA/FARM

Associações e Empresas de Laticínios

- Desenvolvimento de recursos conjuntos
- Compartilhamento de informação







Recursos Produtor e Participante



Novos Recursos

FARM Animal Care Evaluation Preparation Guide

2020-2022
Version 4

CONSIDERATIONS WHEN TRANSPORTING DAIRY ANIMALS


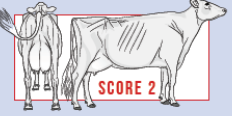
Make decisions in a timely and efficient manner, always considering animal well-being first.

DO

- ✓ Treat, cull or euthanize animals promptly. Segregate sick, injured and non-ambulatory animals from the rest of the herd.
- ✓ Use a BQA Transportation (BQAT)-certified company that is knowledgeable about your animal care expectations and provides safe and comfortable transport for animals. To become certified visit: www.bqa.org.
- ✓ Delay transport of animals that appear exhausted or dehydrated. Cows experiencing heat stress or exhaustion may exhibit open-mouth panting and be reluctant to move. Transport once the animal is rested, fed and rehydrated.
- ✓ Milk lactating cows just prior to transport.

DON'T TRANSPORT ANIMALS





- ✗ That are non-ambulatory.
- ✗ Until all proper milk and meat withdrawal times have been followed. Refer to the *FARM Milk & Dairy Beef Residue Prevention Manual* for proper withdrawal times.
- ✗ In poor body condition, generally a body condition score of less than 2:



- ✗ With conditions that risk their well-being and are unlikely to pass pre-slaughter inspection, including but not limited to:


<ul style="list-style-type: none"> • Emaciated animals • Cancer eye • Blindness in both eyes • Fever greater than 103°F • Drug residues • Peritonitis 	<ul style="list-style-type: none"> • Visible open wounds • Suspected central nervous system symptoms • Fractures or lameness (a score greater than 2 using the FARM locomotion scoring system) 	<ul style="list-style-type: none"> • Unreduced prolapses • Cows that are calving or have a high likelihood of calving during transport • Distended udder causing pain and ambulatory issues
---	---	--

Always consult with your veterinarian if you are unsure if an animal should be transported. And, remember, abuse is never tolerated – including pre-transport and during transport.

This resource was created by the collaboration of the following organizations:

nationaldairyfarm.com | bqa.org



Animal Care Reference Manual

VERSION 4.0 ABBREVIATED



Novos Recursos – Vídeo Eu Cuido

The screenshot shows the FARM website interface. At the top, there is a navigation bar with links: NEWSROOM, STORE, EVENTS, BLOG, CONTACT US, REPORT ANIMAL ABUSE, and PARTICIPANT LOGIN. Below this is a search bar and a dropdown menu with options: Home, What is FARM?, FARM Standards, and FARM Resources. The main content area features a video player showing a close-up of two cows in a barn. The video player has a progress bar at the bottom indicating 00:18 out of 09:57. Below the video player, there is a caption in Spanish:

I CARE- A MI SI ME IMPORTA illustrates to dairy employees how important their role is in the care of the animals. This 10 minute video outlines the importance of being committed to animal care for dairy employees and the joint commitment of employees, supervisors and farm owners to work together to protect their livelihood and the wellbeing of the animals in their care. It also shares the intent of animal activists, undercover employee tactics and encourages employees to alert supervisors when something is not right.

The image displays two overlapping certificate templates. The top one is titled "Certificate of Completion" and the bottom one is titled "Certificado de Cumplimiento". Both certificates are awarded to a dairy employee for completing the video "I Care - A Mi Se Me Importa" and committing to animal care. The bottom certificate includes fields for the date (FECHA) and the dairy name (LECHERÍA). Logos for FARM, Animal Agriculture Alliance, Elanco, and Alltech are visible at the bottom of the certificates.

<https://nationaldairyfarm.com/icare-video/>

Senha: icare2020

Avaliador de Recursos

Hygiene

This booklet cover measures 5.5 inches x 5.5 inches. When open, the length of the cover is 11 inches. Turn to inside back cover for a quick reference guide with more details on hygiene scoring and measuring.

LACTATING COWS

SCORE 1: CLEAN	SCORE 2: MODERATE	SCORE 3: VERY DIRTY
Mud or manure does not exceed 11 inches in length in areas A or B	Mud or manure exceeds 11 inches in length in a single area A or B	Mud or manure exceeds 11 inches in length in both areas A and B

Locomotion

SCORE 1 NORMAL
Animal walks easily with no or only minor changes in gait. Steps may be slightly uneven.

SCORE 2 MODERATE
Asymmetrical gait. Exhibits any of the following: shortening of the stride, slight limp, weight transfer while moving, but may bear weight evenly while standing.

SCORE 3 SEVERE
Difficulty bearing weight on a limb and may also exhibit obvious back arch or head bob. Animals in this

CONTINUING EDUCATION

Standard

FAMILY LABOR	NON-FAMILY LABOR
Failed Standard Triggers Continuous Improvement Plan	Failed Standard Triggers Mandatory Corrective Action Plan
Stockmanship continuing education	Stockmanship continuing education
Pre-weaned calf care continuing education	Pre-weaned calf care continuing education
Non-ambulatory animals continuing education	Non-ambulatory animals continuing education
Euthanasia continuing education	Euthanasia continuing education
Determining animals that are fit for transport continuing education	Determining animals that are fit for transport continuing education

Any individuals with any of the above responsibilities are expected to have annual, documented continuing education in that area.

Compliance

FAMILY LABOR	NON-FAMILY LABOR
Each family member (18 years and older) can have a documented training record for those identified tasks they have responsibility within	Each individual (18 years and older) must have a documented training record for those identified tasks they have responsibility within
OR One family member can sign on behalf and take responsibility for training all immediate family members (18 years and older); individuals must be listed on document	

Immediate family is defined as a grandparent, parent, in-law, spouse, partner, sibling, child or grandchild of the legal guardian(s) or legal owner(s) of the dairy operation.

CONTINUING EDUCATION

With the guidance of the American Association of Bovine Practitioners (AABP), the National Dairy FARM Program Animal Care Version 4 finds the following forms of pain acceptable to meet the following standard:

Pain mitigation is provided for disbudding

This is not an exhausted list of pain control options. The FARM Program does not identify any veterinary drugs on this list. FARM urges producers to consult with their veterinarian before using any veterinary drug, including any of the products identified. Medications listed require a prescription from a veterinarian and appropriate veterinary care. There are no products currently labeled to be used for analgesia (disbudding or dehorning or disbudding pain, however under the guidance and prescription of a veterinarian can be prescribed under if federal regulations are followed (refer to Drug Use Clarification Act or AMDUCA).

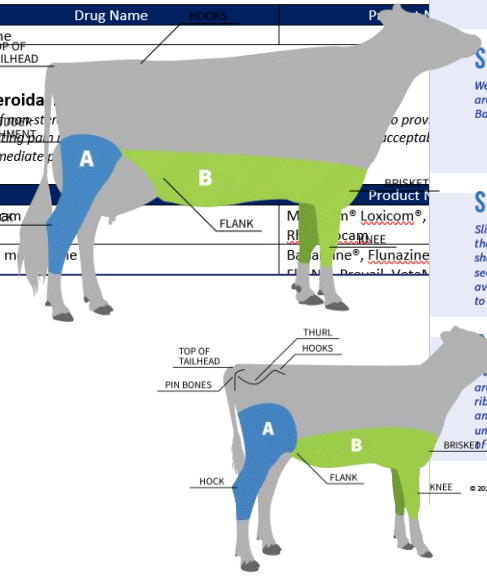
Local Anesthetic

Use of a local anesthetic mitigates the immediate pain associated with disbudding and provides up to five hours of postprocedural analgesia. Federal law restricts the use by or on the order of a licensed veterinarian.¹

Drug Name	Hours	Product Name
Lidocaine	1-2	TOP OF TAILHEAD
Meloxicam	24	Meloxicam, Loxicom, Meloxicam, Meloxicam
Flunixin meglumine	24	Flunixin meglumine, Banamine, Flunazine

Non-steroidal anti-inflammatory drugs (NSAIDs)

These drugs are used to provide long-term pain relief in the immediate post-procedure period.

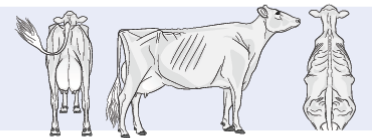


BODY CONDITION SCORING



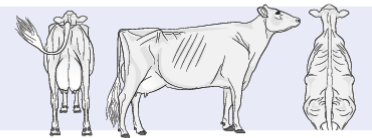
SCORE 1

Gaunt, emaciated animal, having little to no fatty tissue around tail head and short rib region. Extremely pronounced back, hooks and pins.



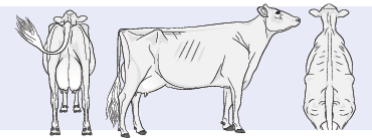
SCORE 2

Thin animal, with a minimal coverage around the tail head and short rib region. Minimal coverage over back, hooks and pins.



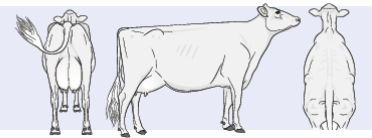
SCORE 3

Well-conditioned animal with coverage around the tail head and short rib region. Back, hooks and pins are not pronounced.



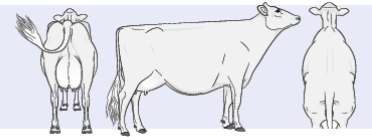
SCORE 4

Slightly over-conditioned animal with more than average coverage around tail head and short rib region, short ribs cannot be felt or seen. Back, hooks and pins have more than average coverage and bone structure difficult to see due to amount of coverage.



SCORE 5

Over-conditioned animal with thick coverage around tail head and short rib region, short ribs cannot be felt or seen at all. Back, hooks and pins have significant coverage and unable to see bone structure to amount of coverage.



© 2020 National Dairy FARM Program. Reprints granted with permission.



Manual do Participante / Módulos On-line

Animal Care Data Management

Menu Transcripts | Exit

What Data is Collected?

- ✓ Herd demographics
- ✓ Evaluation question responses
- ✓ Verification question responses

Third-Party Verification

Menu Transcripts | Exit

Fundamentals of Each Process

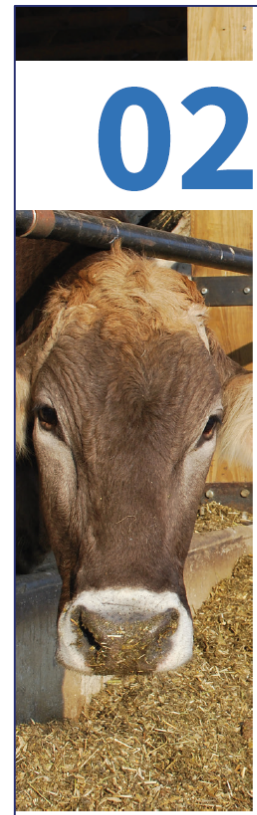
Click on each box to learn more.

Second-Party Evaluations

- ✓ This is an external review and assessment of on-farm animal care practices on a participating farm based on the National Dairy FARM program guidelines. Participating farms must undergo a Second-Party Evaluation at least once every three years.
- ✓ It's a necessary part of a robust animal care/quality assurance program and involves routine monitoring of specific categories.

Third-Party Verification

- ✓ Third-Party Verification inspects a representative percentage of participating farms each year to provide statistically valid data regarding adherence to FARM program guidelines.
- ✓ This is an objective evaluation of conformity and verification of Second-Party Evaluation.



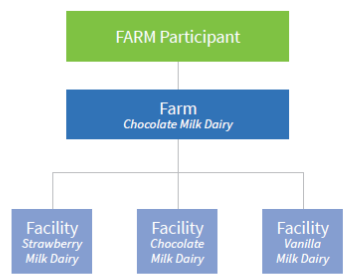
02

Definitions

Participant: Cooperative, proprietary processor, association or farm that has signed current participation agreement with FARM. Participants manage the FARM Animal Care Program on behalf of the farms and facilities belonging to the entity.

Farm: One or multiple facilities owned by the same person, family or group where lactating cows are located and Second-Party Evaluations occur.

Facility: Farm business that provides milk to a participant. A facility is a single site where lactating cows are located and Second-Party Evaluations occur. A farm may consist of a single facility or multiple facilities.



Second-Party Evaluation: An external review and assessment of on-farm animal care practices on a participating facility based on the National Dairy FARM Program guidelines. All facilities within a participant's supply chain must undergo a Second-Party Evaluation at a minimum of once every three years.

Conditional Certification: If the allegations are deemed credible, the protocol is initiated, and the facility will have a Conditional Certification; a participant may continue to procure milk from a facility with a Conditional Certification and remain in good standing with FARM.

Second-Party Evaluator: A trained dairy professional certified by the FARM Program to complete on-farm Second-Party Evaluations. Only who has completed annual FARM is qualified to conduct Second-Party Evaluations. Typically, Second-Party Evaluators are veterinarians or independent staff, veterinarians or independent staff. Evaluators must have at least a college degree and/or on-farm experience, which can include a science or other relevant curricula. Evaluators must complete a phone interview and on-farm training and pass an evaluation. Evaluators must receive annual all requisite training to maintain and ability to conduct on-farm evaluations.

Decertified: If the protocol investigation concludes that willful mistreatment or neglect is substantiated, and the facility is not in compliance with FARM program guidelines, the facility will be decertified.



Third-Party Verifications: A professional inspects a representative percentage of participating farms each year to provide evidence of uniform implementation of standards. Once a Second-Party the dairy facility is eligible to be through statistical sampling, to verify. The statistical sampling criteria such as FARM participation and size to ensure that the number of participating farms is representative of the population. Third-Party Verifiers help ensure that farms are implementing the program and that the program accomplishes its goals.

Third-Party Verifier: A trained professional, not employed by a participant, who does not have an interest in the operation or the outcome of the program. Third-Party Verifiers must have the necessary qualifications as Second-Party Evaluators.

Certified: A facility that is up to date with FARM Animal Care evaluation in the program evaluation cycle, does not have any overdue corrective action plans to the FARM Willful Mistreatment protocol.

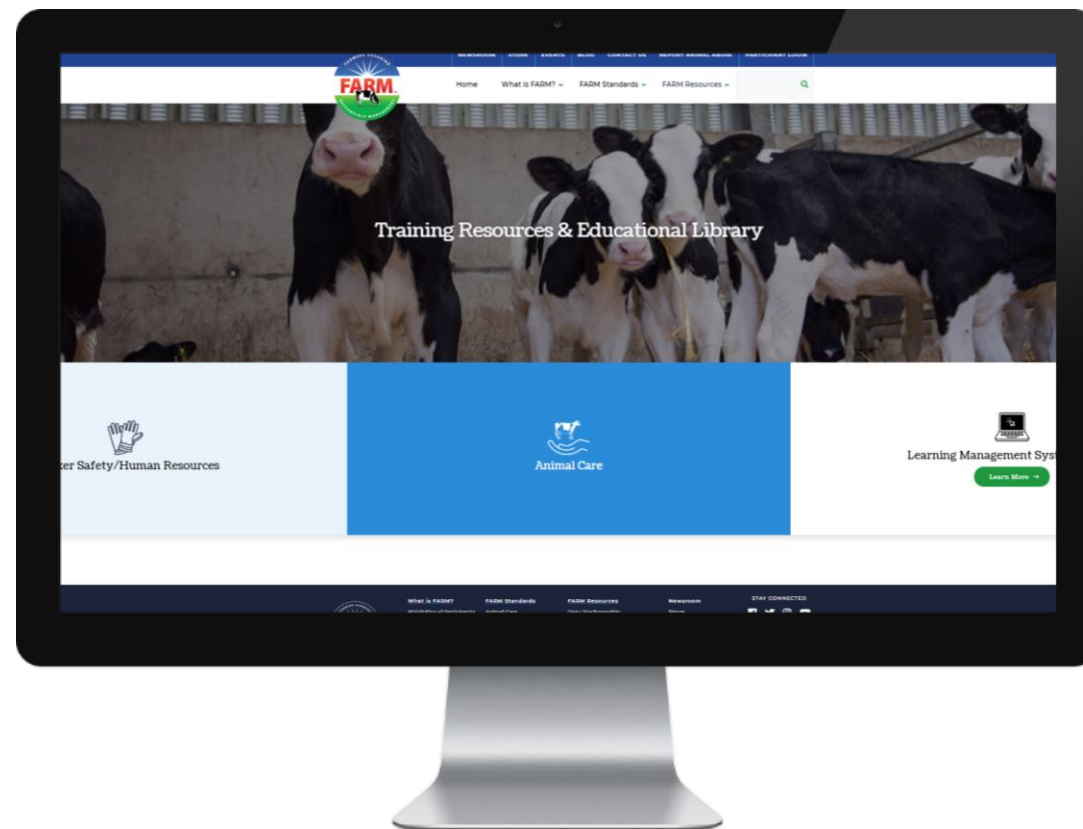
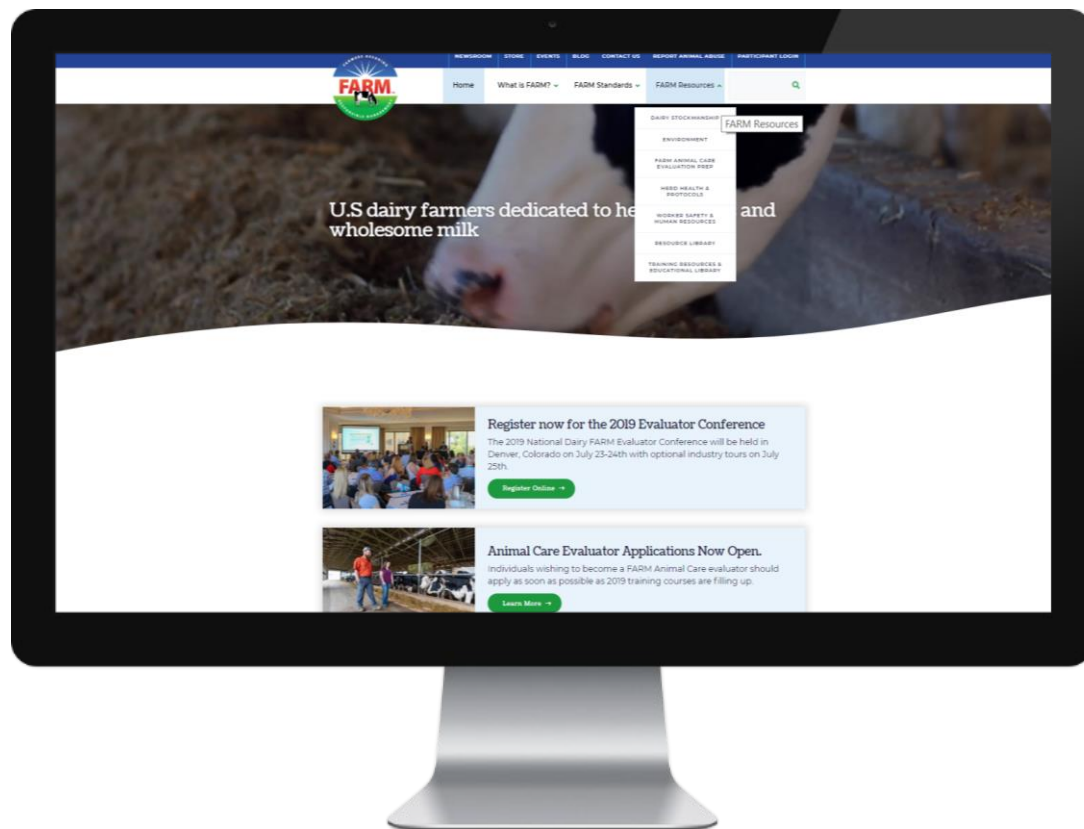


Animal Care Participant Handbook
VERSION 4.0

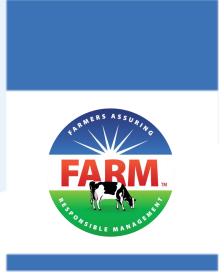
Coming August 2020



Site da FARM



www.nationaldairyfarm.com



Envolvimento do Cliente de Gado Leiteiro



2020 Clientes prioritários para o Envolvimento da Cadeia Alimentar

Varejo Alimentos



Restaurante



Marcas

MARS

Chobani®



Nestlé



Unilever

Kraft Heinz



General Mills
Making Food
People Love



Sharing smiles

Saputo



DANONE
ONE PLANET. ONE HEALTH





Thank You **Obrigado**

nationaldairyfarm.com



dairyfarm@nmpf.org